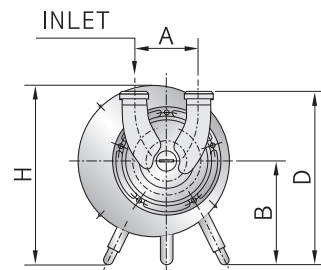
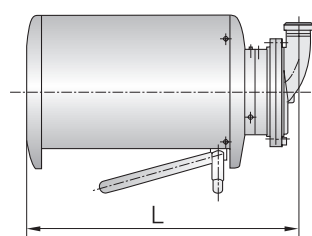


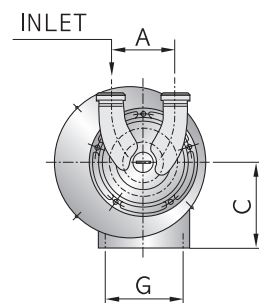
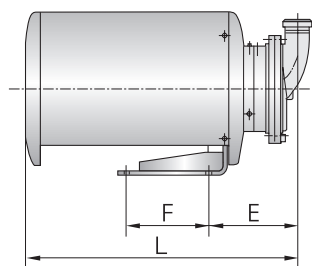


“The reliable choice for your process”

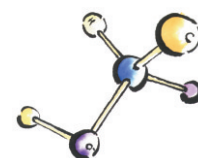
■ STANDARD VERSION



■ BASE MOUNTING VERSION



MODEL NO.	MOTOR RPM KW		CONNECTION SUCT. DISCH		DIMENSION									WEIGHT
					A	B	C	D	E	F	G	H	L	KG
JSZ624-315	1500	2.2	51	51	140	200	150	350	195	260	135	270	600	41
JSZ624-318	1800	2.2	51	51	140	200	150	350	220	315	135	270	600	43
JSZ624-518	1800	3.7	51	51	140	220	180	390	190	230	170	325	660	59
JSZ927-515	1500	3.7	63	63	150	220	180	390	190	230	170	325	660	63
JSZ927-715	1500	5.5	63	63	150	260	220	440	190	230	190	390	745	94
JSZ927-718/1018	1800	5.5/7.5	63	63	150	260	220	440	220	315	190	390	745	99
JSZ2230-1015/1515	1500	7.5/11	63	63	170	260	220	440	190	230	190	390	755	105
JSZ2230-2018/2518	1800	15/18.5	63	63	170	—	250	—	270	255	220	485	840	168

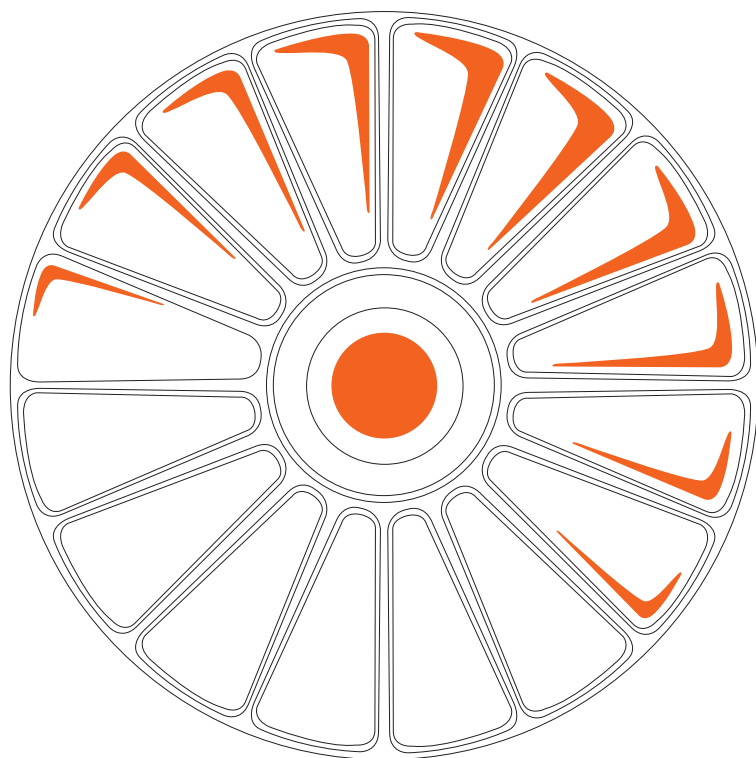


JEC

408, Cheongyo-Ri, Bibong-Myun, Hwaseong-City, Kyunggi-Do, Korea
Tel:+82-31-355-0316, Fax:+82-31-355-0319, www.jecpump.com, E-mail:jecp@jecpump.com

JEC - Always a Step Ahead

SELF-PRIMING CENTRIFUGAL PUMPS JSZ SERIES



JEC
P U M P S

3IP

High Pride
Higher Performance
The Highest Quality Products



JEC Ltd. is the specialist in the fields of sanitary pumps.

JEC was established in 1990 and started producing the sanitary pumps that were made by precision casting and press for the first time in Korea. Since then, JEC has successfully produced and marketed the processing plants such as rotary pumps, self-priming pumps, and blenders as well as centrifugal pumps. Now we are enjoying a good reputation for specially applied fields as well as general installation demands. JEC's success as good as highest quality manufacturer in the fields of sanitary pumps in the past is attributed to artisanship and customer's belief.

We build up not deals but relationships.

A good relation with customer is prerequisite to our growth.

JEC considers exchanging beliefs with you more important than everything else.

Under JEC's customer's support, we believe that we will meet your full needs, fulfill your expectations, and contribute to customer's further prosperity.

We would like to continue to make every effort so that another progress will be started at JEC.

The JEC philosophy is keeping promises.



Our pride is created by high quality!

The JEC JSZ series pump is a self-priming side channel pump particularly suitable for pumping products which contain varying quantities of air and gases which cannot be pumped by a centrifugal pump.

They must be filled with the liquid only at the first start, afterward they are able to self-priming also if the suction pipe is empty.

Today's automatic production operations require the total removal of fluid from pipe work and systems, both before and after the cleaning cycle.



JSZ series Self-priming Pumps

JEC - Always a Step Ahead

- A special side channel within the pump first increases, then decreases the internal volume of the unit as the impeller rotates from suction to discharge parts. The increase in volume creates a vacuum resulting in suction lift, while the decrease in volume generates discharge pressure. A characteristic of the pump is that its power requirement decreases with increasing capacity.
- Side channel pumps have many advantages but normally suffer from one major disadvantage, relatively high noise level. This is due to the difficult suction condition where the product is directed into the impeller transversely to the pump direction.
- When designing the JSZ series pumps, JEC took steps to minimize the noise levels throughout the pump. For example, both inlet and outlet channels were developed to be as streamlined as possible.
- Adding an JEC JSZ series pumps to your process plant will improve the working environment by ensuring noise levels are kept to a minimum.
- The pumps can deliver capacities up to 50,000 l/hr and deliver pressure up to 4 bar and have suction lift capability up to 5 meters(16 feet).

STANDARD DESIGN

Construction

- The robust design of the pumps by short and robust shaft and the spring loaded self-balanced mechanical seal type.
- There is easy access to the interior of the pump for maintenance work.
- All wearing parts can be removed and fitted easily.

APPLICATION

- The JEC JSZ series pump is specially designed for food, chemical, pharmaceutical and other industries where stainless steel is resistant to the liquids to be pumped.
- The JSZ series pump is particularly suitable as return pump in CIP cleaning system.

Motor

- TEFC flanged motor according to IEC standard 1800 r/min., 3-phase AC, 60 Hz, or 1500 r/min., 50 Hz.
- Voltage as required.

PERFORMANCE CURVES

Connections

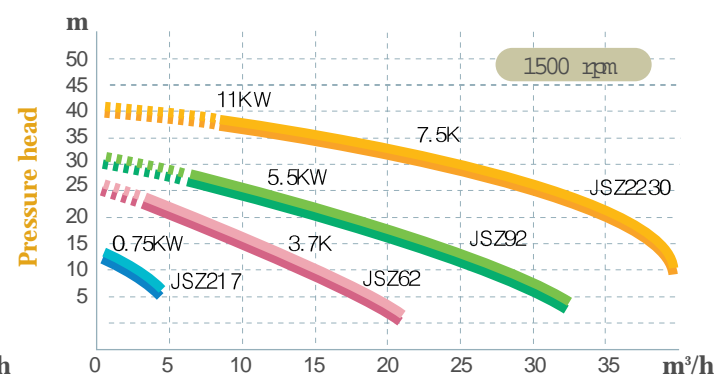
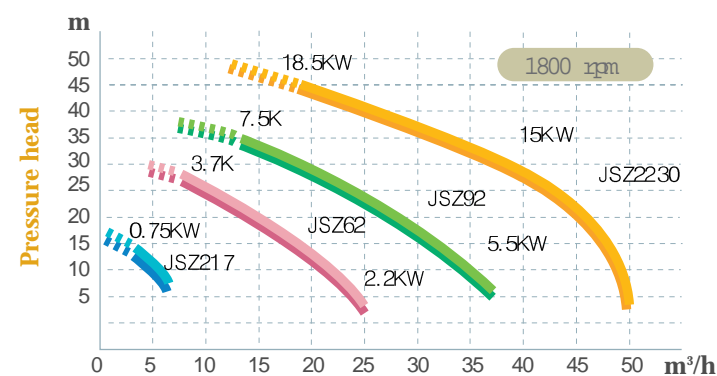
- Complete connections according to optional standard ISO male, ISO clamp, SMS, DIN, BS and flange.

Materials

- All parts in contact with the liquid are made of stainless steel precision casting, AISI 316, and also clamps, legs and motor shrouds are made of AISI 304 stainless steel.
- Adaptor between pump and motor is made of AISI 304 stainless steel.
- Packings of nitrile rubber(NBR).

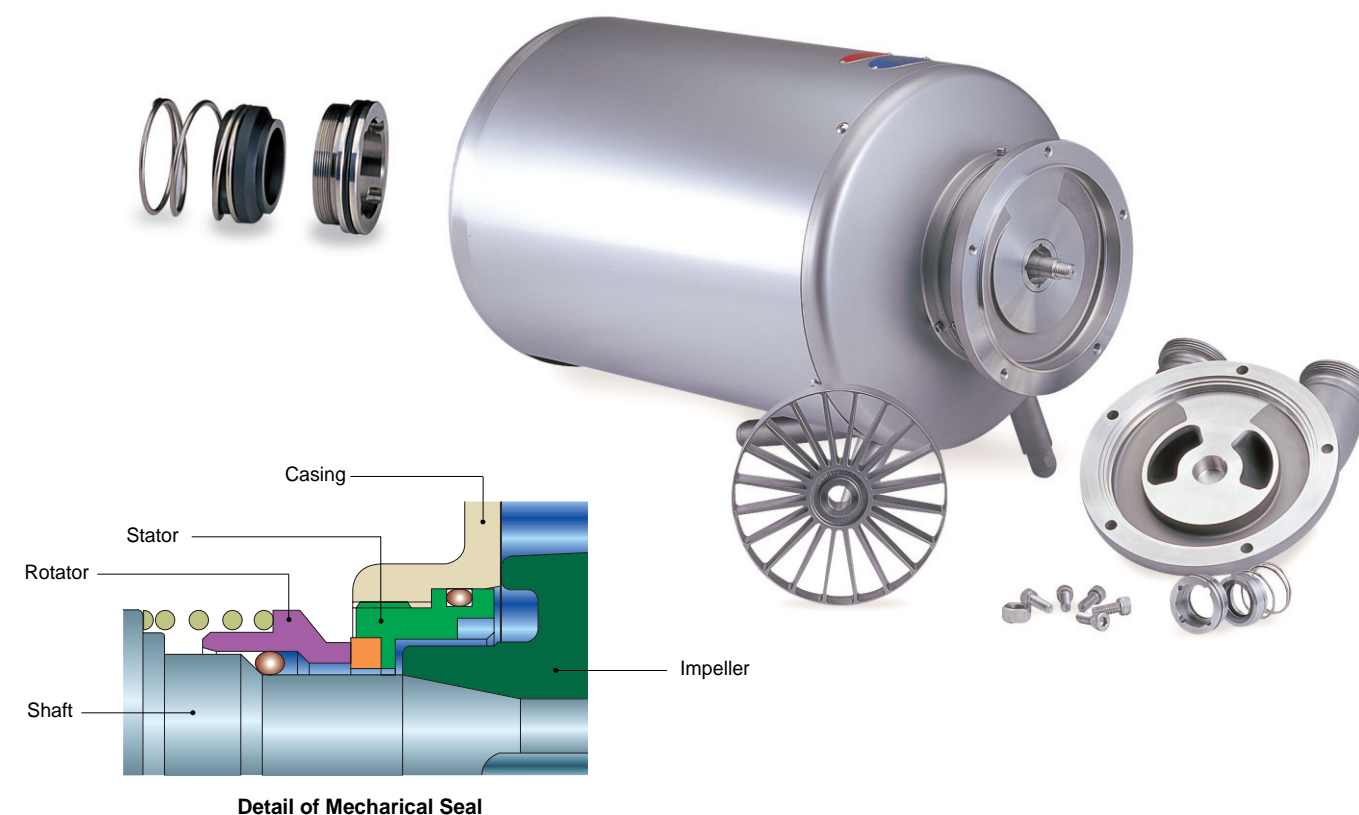
MECHANICAL SEAL

The spring loaded balanced mechanical seal has a stationary seal ring of SiC ring and rotating ring of carbon.



Performance data refer to water at 20 °C, Permissible tolerance ±5%

“The higher *the precision* we have,
the longer *the span of product life* we have”



Our pride is created
by high quality!
JEC Sanitary Pumps