

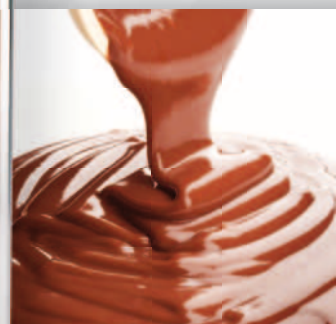
Lutz B70V Sanitary

NEW:

Gentle, reliable, and hygienic
according to the 3-A Sanitary Standard.
For optimal pumping of thin-bodied
to highly viscous media.



Food Pharma Cosmetics



Safety is our Concern

Lutz B70V Sanitary:

**Designed according to the latest directives
for the high requirements of the food, beverage,
pharmaceutical, and cosmetics industry.**



Feature	Function	Benefit
Certified to 3A, latest standard	Guarantee / constructed to latest 3A standards	Complies with sanitary design and construction
All parts in contact with liquid polished to roughness < 0,8 Ra	Smooth surface	Reduces bacteria traps / adherence to the surface
No threads in contact with the pumped liquid	No bacteria traps	No contamination
Low shear rate	Gentle pumping	Safe product handling
New designed torsion shaft	Drive shaft	1 – 100,000 cP
Choice of mechanical seals to 3A Standard / FDA materials	Mechanical sealing of high viscosity liquids	Open/closed mechanical seal, high viscosity, different seal face materials
Newly designed stator locking device	Quick change of stator	Easy assembly and maintenance
Tri-Clamp connection	Connection to hose or pipe	Fast and simple connection
Alu and SS lantern	Bearing housing between motor and pump tube	Choice of materials
Designed for manual cleaning	Cleaning	Easy cleaning
Choice of motors	Electrical or air driven motor	Fixed or variable speed
Specially designed flange	Quick assembly/disassembly of motor	Easier to service or clean the sanitary pump

Materials

Metal parts with product contact:	stainless steel (1.4571, 1.4404)
Seals:	EPDM (FDA compliant)
Mechanical seal:	SiC/hard carbon/EPDM (acc. to 3-A standard) opt. SiC/SiC/EPDM or closed version for stricter requirements
Stator:	PTFE

Technical data

Delivery rate:	max. 50 l/min
Delivery head:	up to 10 bar
Viscosity:	up to 100,000 mPas
Temp. of medium:	max. 140 °C
Length:	1,100 mm
Immersion tube ø:	54 mm



Practical, reliable and ready for use

The design of the Lutz B70V Sanitary pump emphasises practical use: only manually detachable, thread-free connections have been used in the areas in contact with the medium. The Lutz B70V Sanitary is easy and fast to dismantle for thorough mechanical cleaning and to reassembly.


An open type spring loaded mechanical seal is available or optionally, a closed version to avoid direct contact with the product.

All materials and the seal designs conform to 3-A Sanitary Standard.

Thanks to the new quick connection, the drive motor can be quickly separated from the pump flange. This facilitates handling, cleaning and transferring the pump to a new container.







Clean results that you can rely on

With a flow rate of 12 to 50 l/min and an operating pressure of max. 10 bar, the Lutz B70V Sanitary is suitable for pumping thin-bodied to highly viscous media.

Thanks to low pulsation and low shear effect, solid particles and soft solids such as small fruit pieces can be pumped.

The chosen immersion depth and the small immersion tube diameter ensure that drums, IBC containers and other commercially available containers are emptied safely and almost completely from the top.

Versatile and variable: you can adjust the Lutz B70V Sanitary to the specific requirements of your process demand. Various drive motors and further accessories are available to you for this purpose.

Our complete range of pumps and accessories together with our careful advice satisfies just one objective: your ideal solution!

With our “eye for detail”, we develop customised solutions for your applications. Your questions and needs allow us to work together in the development of innovative solutions, in a wide range of industries.



Lutz Pumpen GmbH

P.O. Box 14 62 · D-97864 Wertheim

Tel.: (+49 93 42) 8 79-0 · Fax: (+49 93 42) 87 94 04

e-mail: info@lutz-pumpen.de

www.lutz-pumpen.de